

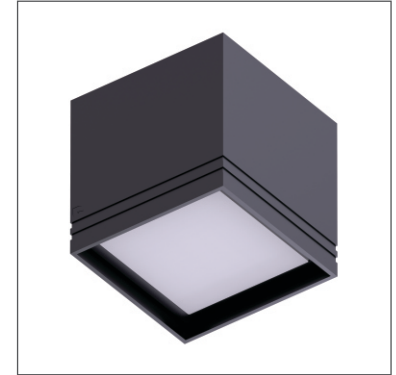
# Box Q2

CE IP40 F III Kg 0,200



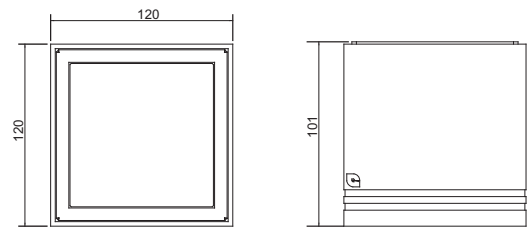
## TECHNICAL DATA

Application	Surface mounted (ceiling)
Location	Indoor
Light Source	LED
Optics	Diffused
LED No.	1
LED Life time (L80B10)	50000 hours
Input Voltage / Current	230Vac
Connection details	Parallel Connection
Installation	Surface mounted ceiling
Weight	1,16Kg
Supply	230Vac
Wiring	Provided with 30cm PVC cable
Working Temperature	-20°C - +50°C



## FINISHING

Materials	Anodized aluminium body, Satinized PMMA diffuser
Finishing	Black (B), White (W), Grey (G)
Diffuser	PMMA Diffuser



Family	Type	LED NO	WAT/LED	CCT	Optics	Finish	Power	Dimming	Options
BX-Box	Q2 - Square	1	16	27-2700K 30-3000K 40-4000K XX- Custom	DD - Diffused	B - Black W - White G - Grey	AC - 230Vac	TR - Triac	XXX

Sample: BX - Q2 - 1 - 16 - 27 - DD - B - AC - TR - XX