

# Eclipse Q1



IP68



Kg 0,200



Kg 500

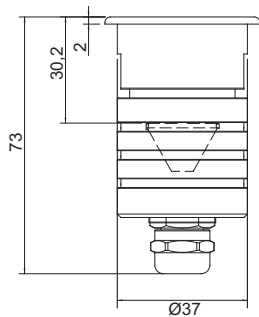
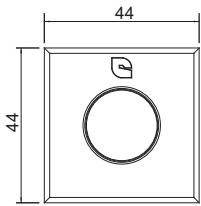
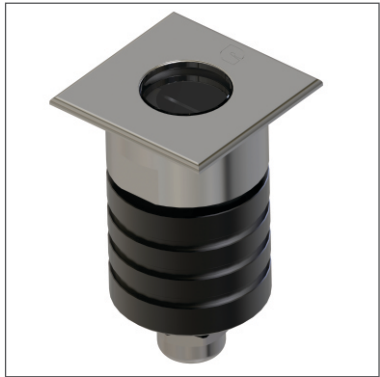


## TECHNICAL DATA

Application	Floor / Wall Recessed Spot Light
Location	Indoor / Outdoor
Light Source	LED
Optics	7°, 23°, 43°, 7°x39°
LED No.	1
LED Life time (L80B10)	50000 hours
Input Voltage / Current	350mA / 500mA
Connection details	Series (supply "S") Parallel (supply "P")
Installation	Recessed (Ceiling, Wall, Floor) Brick work installation with housing box (not included) Panel installation with torsion spring (not included)
Weight	Finish A, : 0,215kg      Finish I, S : 0.19kg
Installation hole	Ø40mm(with springs) - Ø38mm(without springs)
Supply	24Vdc (supply "P"), 500mA (supply "S")
Wiring	Provided with 150cm neoprene cable
Working Temperature	-20°C - +50°C

## FINISHING

Materials	Anodized aluminium body, anodized aluminum or AISI 316L Stainless steel trim, tempered glass diffuser
Finishing	Anodized Aluminum (A), Worked Steel (I), Satinized Steel(S)
Color	Matte Steel
Diffuser	Tempered Glass



Family	Type	LED NO	WAT/LED	CCT	Optics	Finish	Power	Dimming	Options
EC - Eclipse	Q1 - Square	1	1 2	27-2700K 30-3000K 40-4000K 50-5000K RD-Red GR-Green BL-Blue 22-2200K XX- Custom	7-7° 23-23° 43-43° 7°x39°	A - Anodized Aluminum I - Worked Steel S - Satinized Steel	CC (350mA/500mA )	N - None	HML - Half Moon Lens

Sample: EC - Q1 - 1 - 1 - 27 - 7 - A - CC - N - HML

## ACCESSORIES

CAW32-Casing Polypropylene Water Stop

CAS32-Casing Polypropylene

SPR32

Gel Connector

Optional

