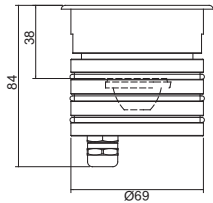
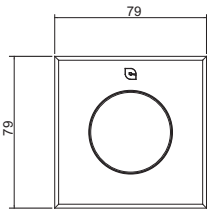
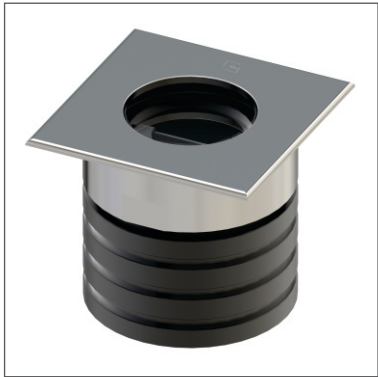


# Eclipse Q2



## TECHNICAL DATA

Application	Floor / Wall Recessed Spot Light
Location	Indoor / Outdoor
Light Source	LED
Optics	8°, 23°, 43°, 10°x41°
LED No.	1
LED Life time (L80B10)	50000 hours
Input Voltage / Current	350mA / 500mA
Connection details	Series (supply "S") Parallel (supply "P")
Installation	Recessed (Ceiling, Wall, Floor) Brick work installation with housing box (not included)
Weight	Finish A, : 0,67kg      Finish I, S : 0.78kg
Installation hole	Ø70mm
Supply	24Vdc (supply "P"), 500mA (supply "S")
Wiring	Provided with 150cm neoprene cable
Working Temperature	-20°C - +50°C



## FINISHING

Materials	Anodized aluminium body, anodized aluminum or AISI 316L Stainless steel trim, tempered glass diffuser
Finishing	Anodized Aluminum (A), Worked Steel (I), Satinized Steel(S)
Color	Matte Steel
Diffuser	Tempered Glass

Family	Type	LED NO	WAT/LED	CCT	Optics	Finish	Power	Dimming	Options
EC - Eclipse	Q2 - Square	1	4	27-2700K	8-8°	A - Anodized Aluminum	CC (350mA/500mA )	N - None	HML - Half Moon Lens
				30-3000K	23-23°	I - Worked Steel			
				40-4000K	43-43°	S - Satinized Steel			
				50-5000K	10°x41°				
				RD-Red					
				GR-Green					
				BL-Blue					
				22-2200K					
				XX- Custom					
Sample: EC - Q2 - 1 - 4 - 27 - 7 - A - CC - N - HML									

## ACCESSORIES

CAW69-Casing Polypropylene  
Water Stop

Gel Connector

Optional

